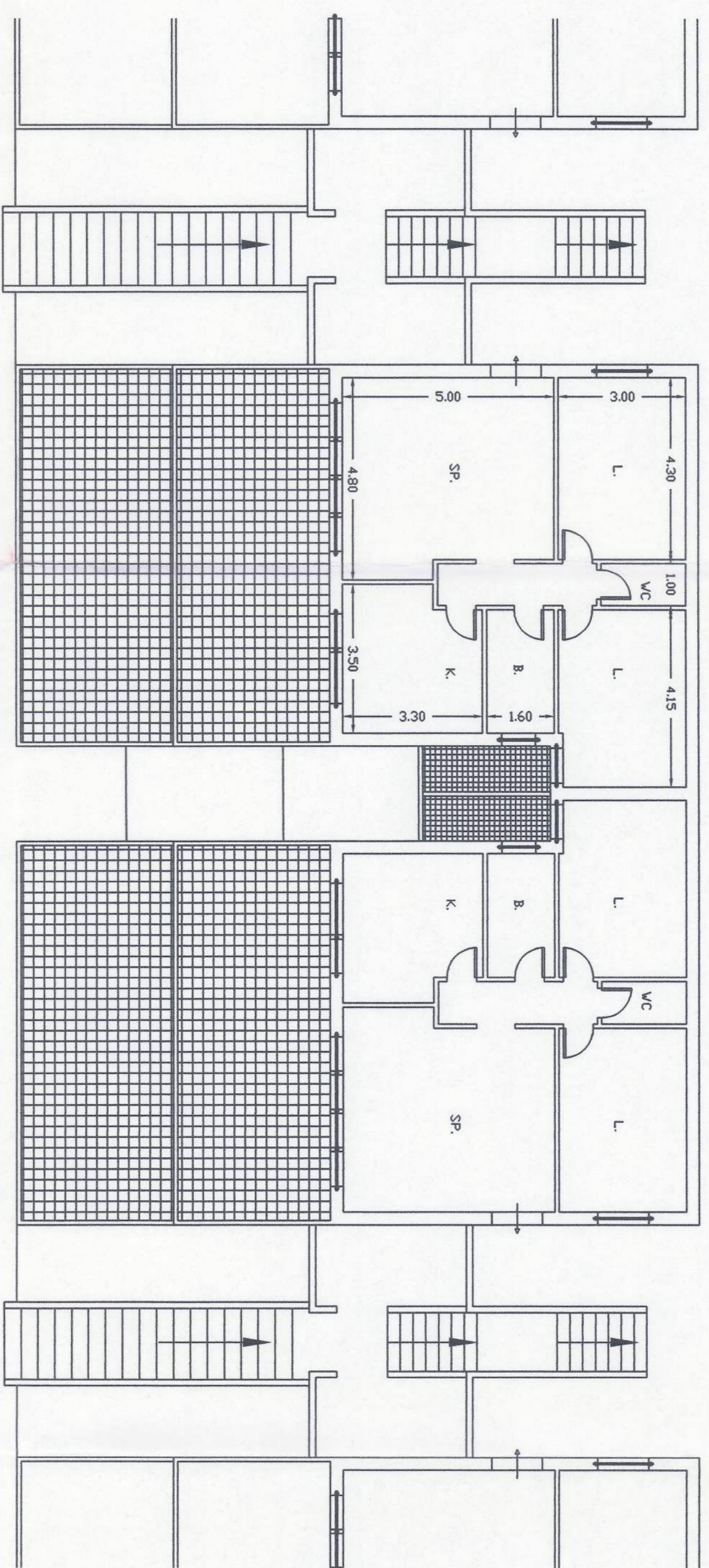
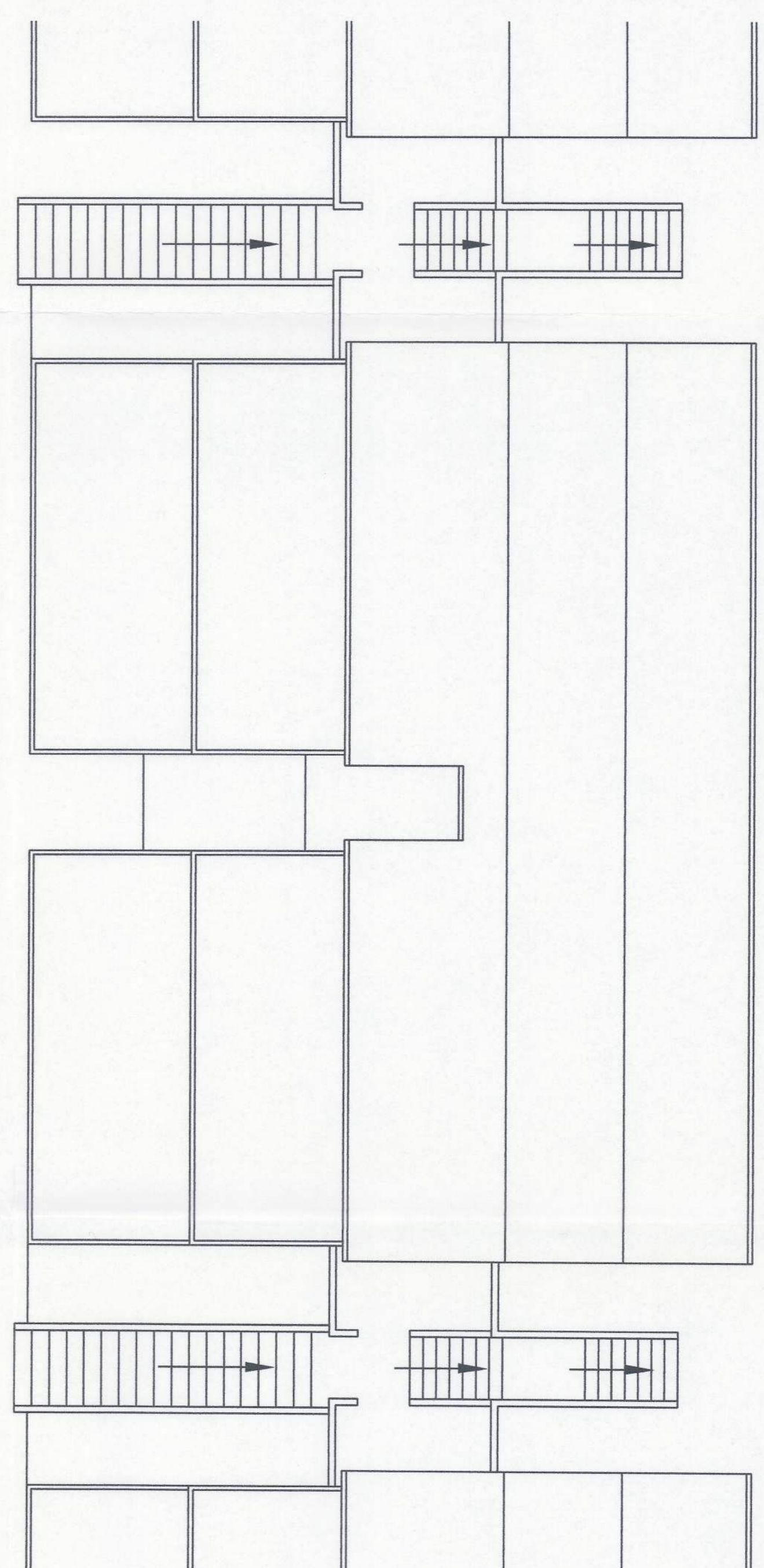


PIANTA TIPO

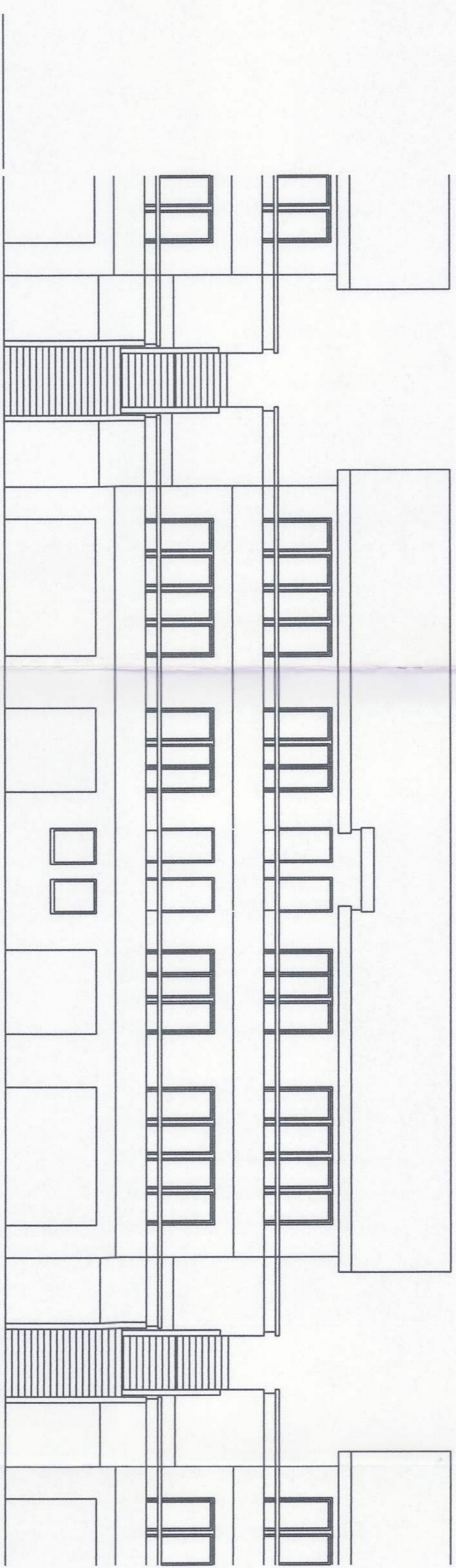


BLOCCO TIPO A

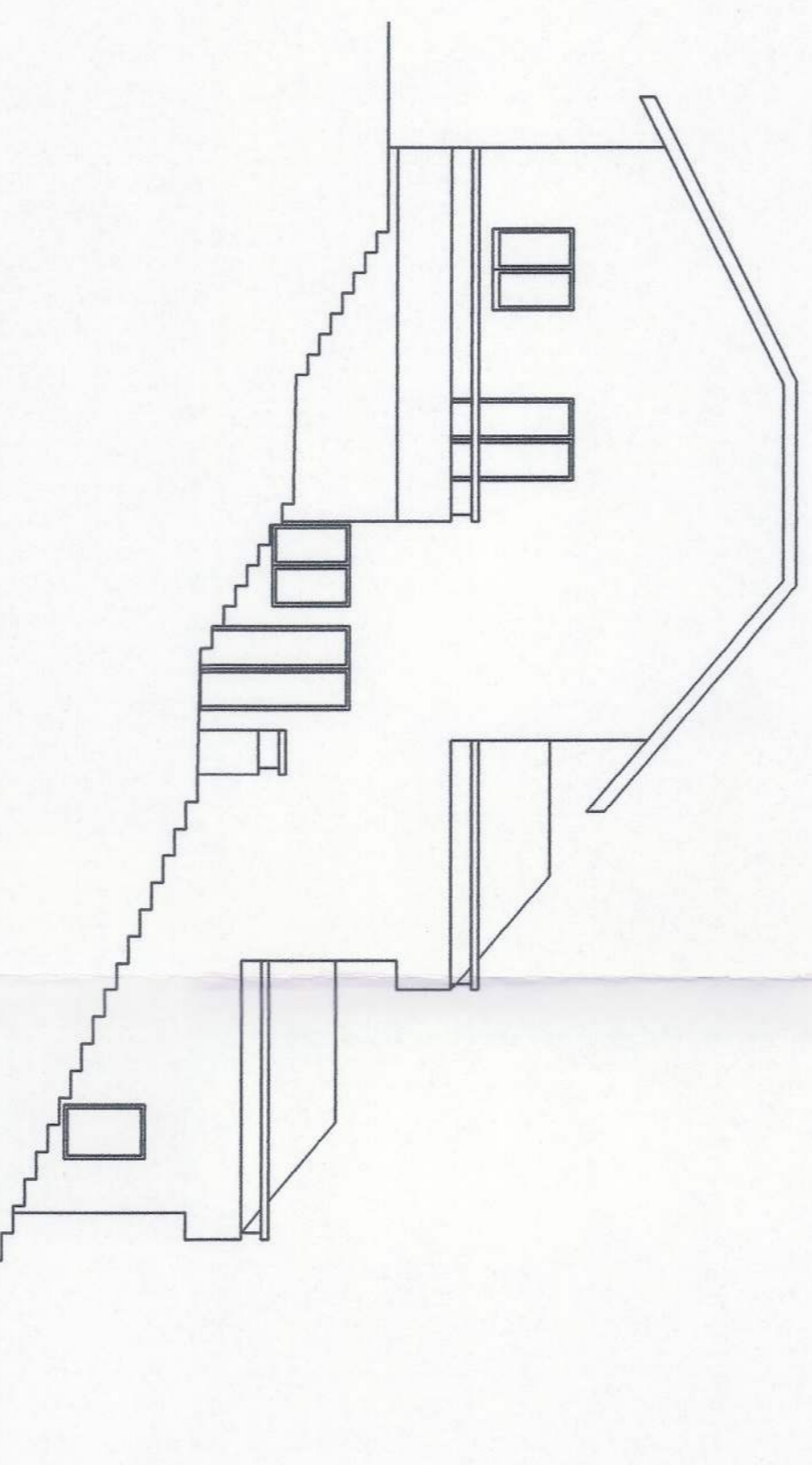


PIANTA COPERTURA

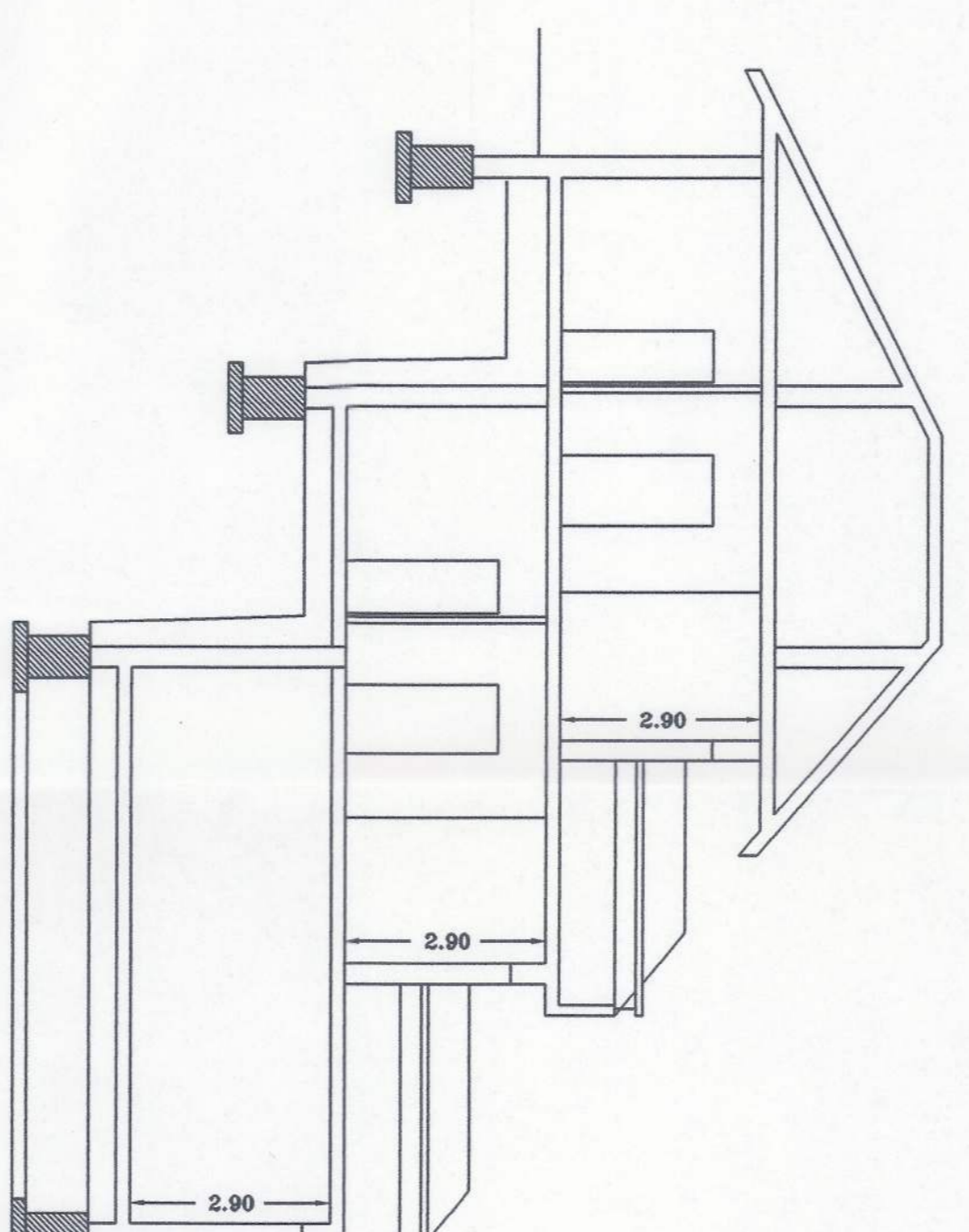
PROSPETTO LATO VALLE



PROSPETTO LATERALE

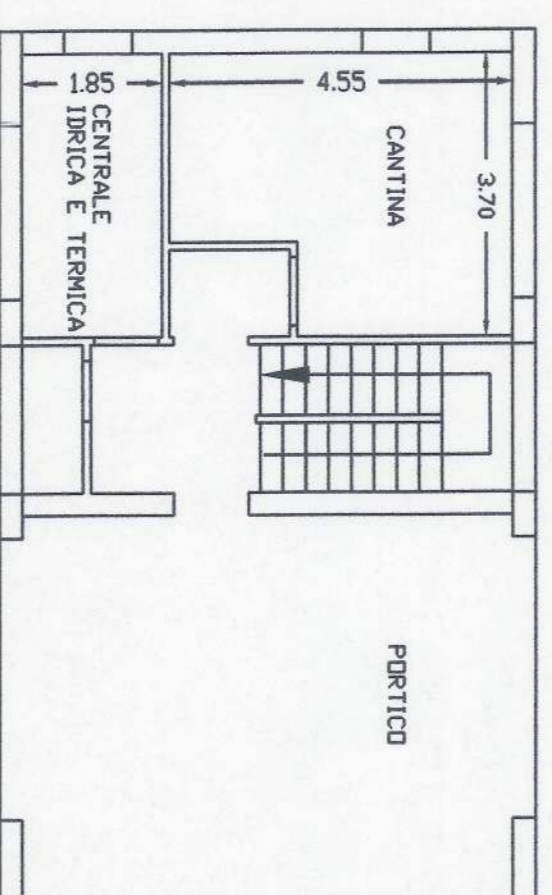


SEZIONE

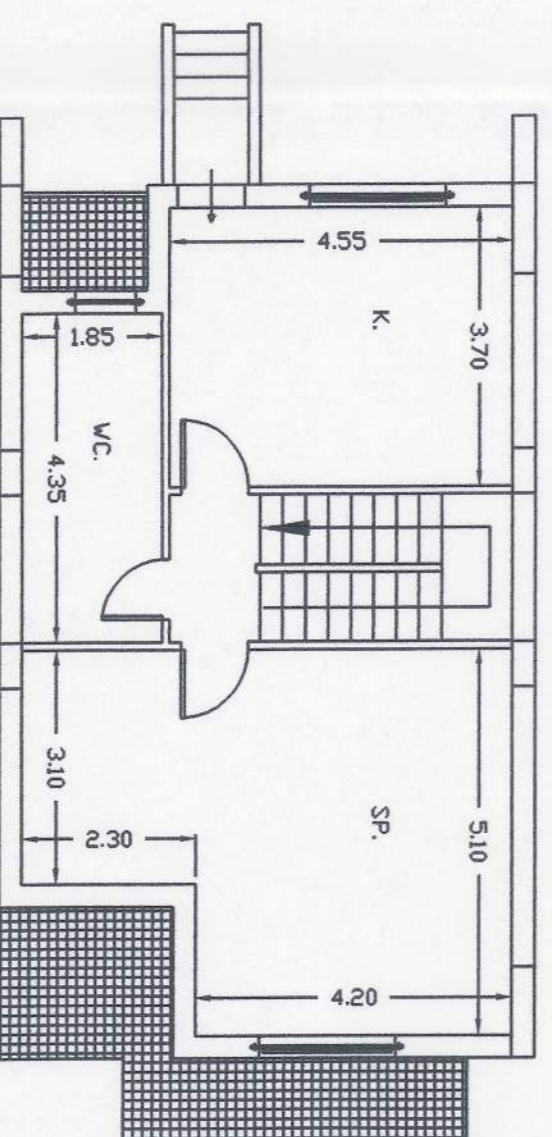


BLOCCO TIPO B

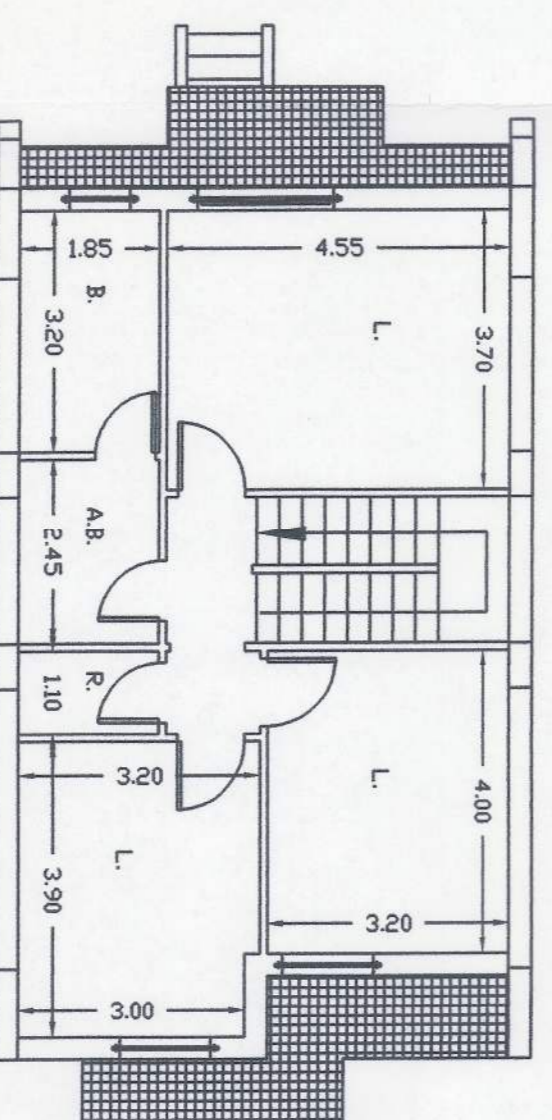
PIANO SEMINTERRATO



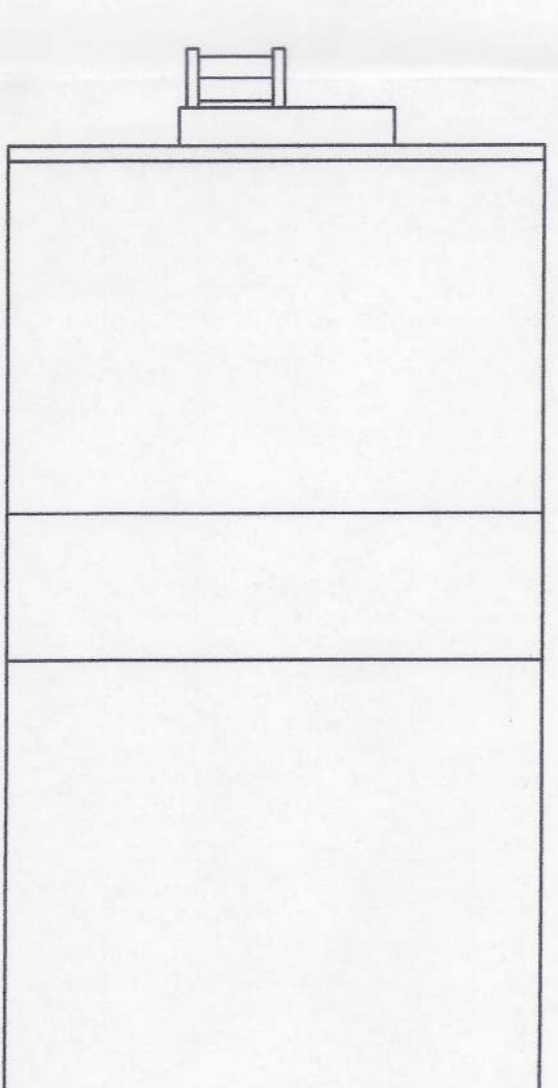
PIANTA SECONDA ELEVAZIONE



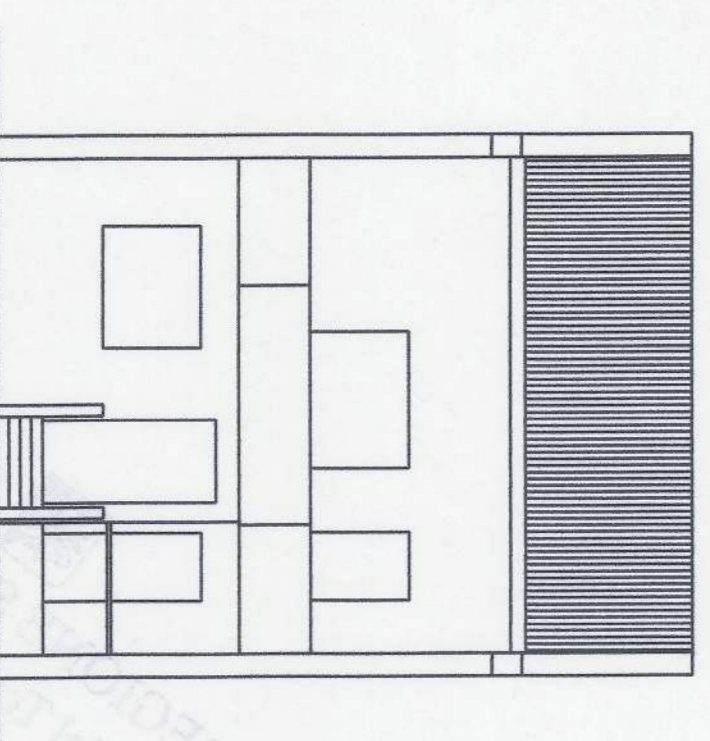
PIANTA TERZA ELEVAZIONE



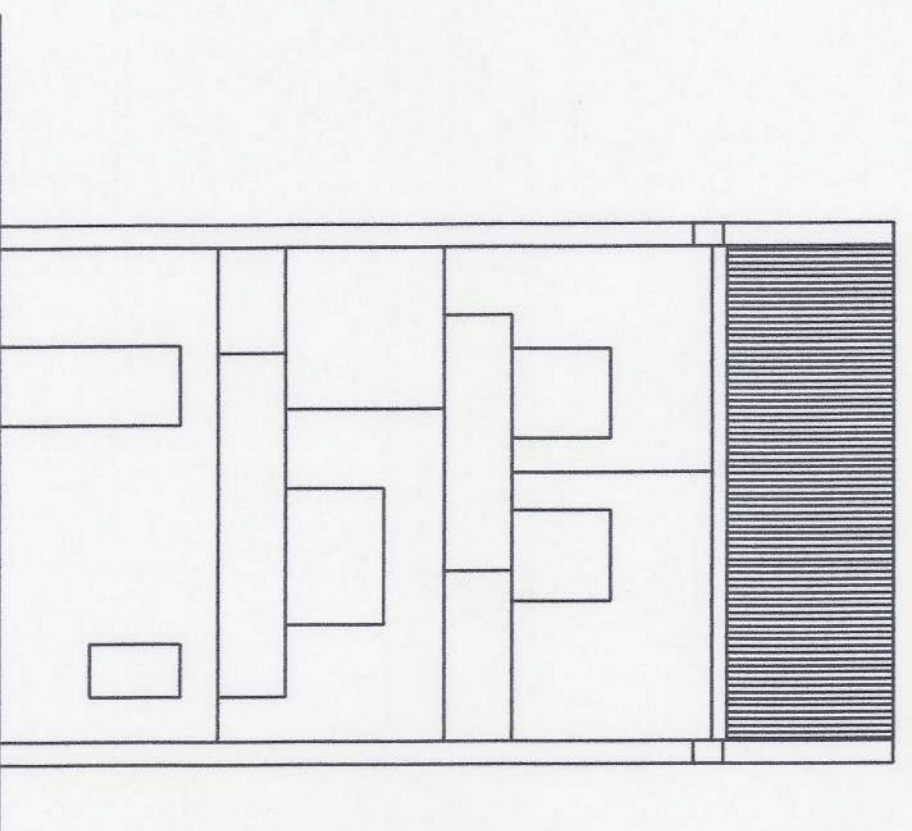
PIANTA COPERTURA



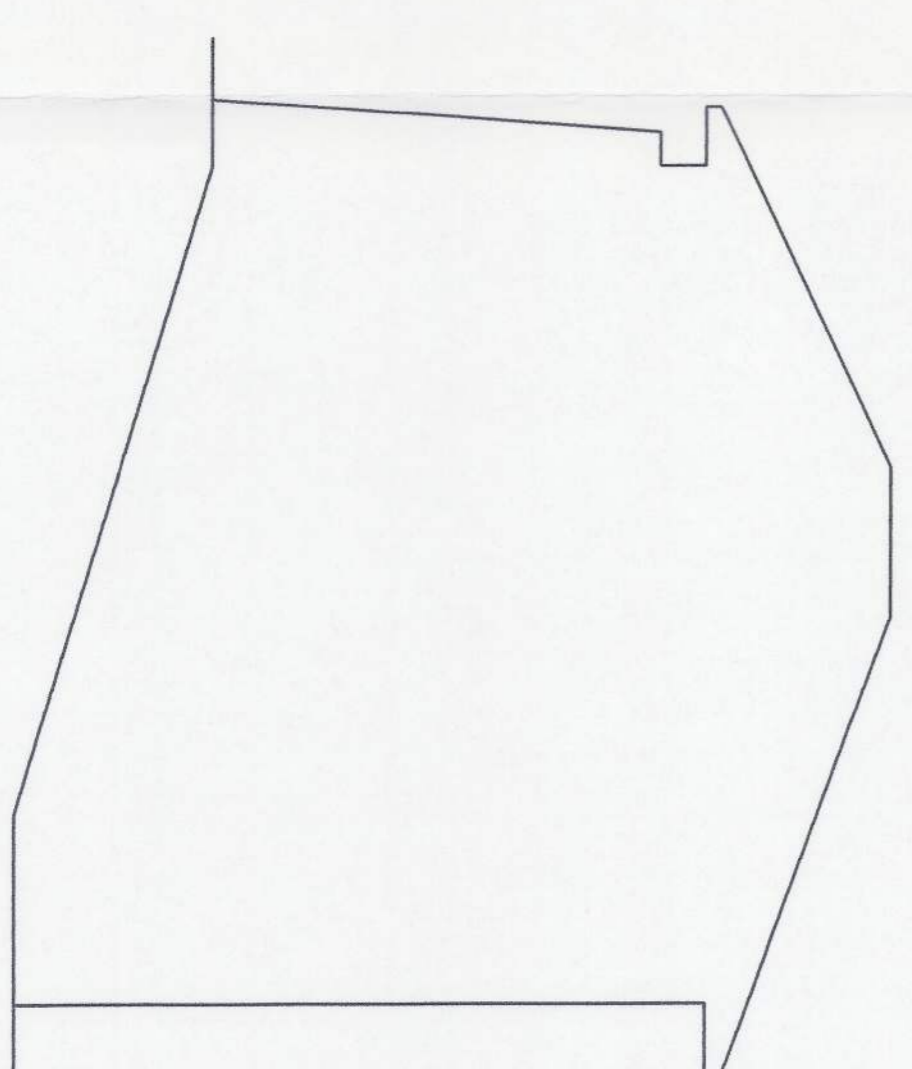
PROSPETTO LATO MONTE



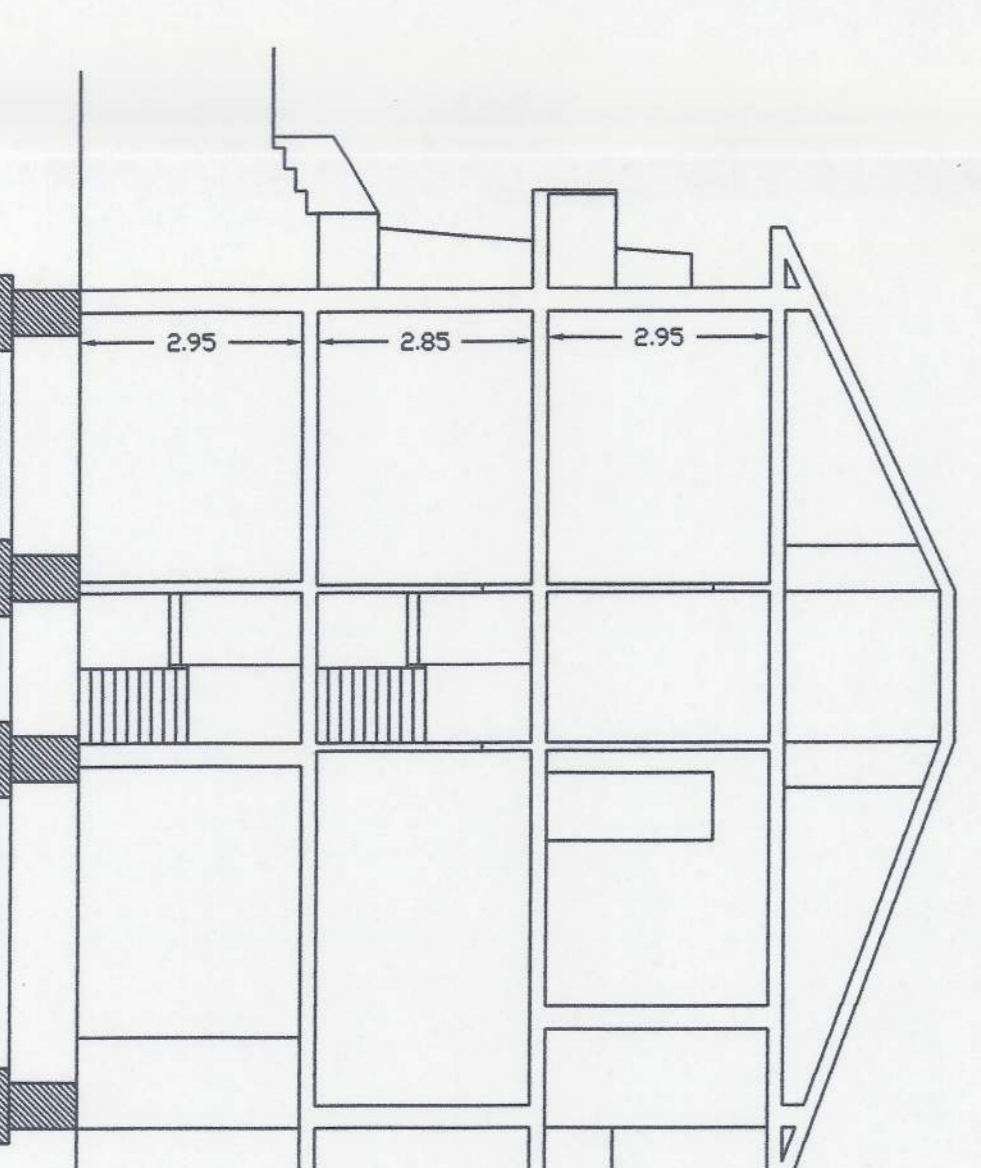
PROSPETTO LATO MONTE



PROSPETTO LATERALE



SEZIONE



Liv. T. 7

IL COMMISSARIO AD ACTA  
*(Maddalena)*

U.S. DISTRICT COURT  
SOUTHERN DISTRICT OF NEW YORK

COMUNE DI MIRTOC  
PROVINCIA DI MESSINA

PIANO REGOLATORE GENERALE  
Prescrizioni esecutive ex art. 2 L.R. n° 71 del 27.12.78  
UFFICIO DEL GENIO CIVILE  
MESSINA -  
P. RIBAUDO, ARCH.

IL SINDACO  
Visto con riferimento a tutto quanto  
e data esperimento fatto e ricevuto al  
della  
25 NOV. 2002


 1914  
 Consulate of Mexico  
 San Francisco, Calif.  
 F. R.

Adottato con delibera consiliare  
n.° del

6  
5  
4  
3  
2  
1

Publicated per giorni  
dal al consecutivi  
mediente

Comunale—Ufficio segretario.

Il Segretario Comunale

STATO CON DELIBERAZIONE

DEL COMMISSARIO ALCA  
N. 1 DEL 5-12-1903

ED ALLEGATO ALLA STESSA  
Il segretario Complesse